

Welcome to the AccessibilityOnline Webinar Series



A collaborative program between the ADA National Network and the US Access Board

The Session is Scheduled to begin at 2:30pm Eastern Time

We will be testing sound quality periodically

Audio and Visual are provided through the on-line webinar system. This session is closed captioned.

Individuals may also listen via telephone by dialing 712-432-3100 code 930098 #

(This is **not** a Toll Free number)

The content and materials of this training are property of the US Access Board and the Great Lakes ADA Center and cannot be used and/or distributed without permission.

This program is funded under award #H133A060097 from the U.S. Department of Education through the auspices of the National Institute on Disability and Rehabilitation Research (NIDRR) and an inter-agency agreement with the U.S.

Access Board. For permission to use training content or obtain copies of materials used as part of this program please contact us by email at adata@adagreatlakes.org or toll free (877)232-1990 (V/TTY)

www.AccessibilityOnline.org

1



Webinar Features

- **Closed captioning** – click **CC** icon (top of screen) or control-F8 and adjust your screen
- **Questions** - type and submit questions in the Chat Area Text box or press control-M and enter text in the Chat Area
- Please do not use emoticons or hand-raising features during this session

2



Presenters



Peggy Greenwell

Paul Beatty

UNITED STATES ACCESS BOARD

3



Accessible Marinas and Boating Facilities

Session Agenda

- **ADA and ABA Standards (facilities covered)**
- **Newly constructed vs. existing marinas**
- **Other related provisions**
- **Boating facility provisions**
- **Alterations**
- **Questions**

4

Americans with Disabilities Act

Title II covers:

- **State and Local government Facilities**



5

Americans with Disabilities Act

Title III covers:

- **Commercial Facilities**
- **Places of Public Accommodation**
- **Non-Profit as well as For-Profit**



6

Architectural Barriers Act

Covers:

- Facilities that are designed, constructed, altered, or leased by, or on behalf of the United States.
- Facilities receiving certain types of Federal Financial assistance.

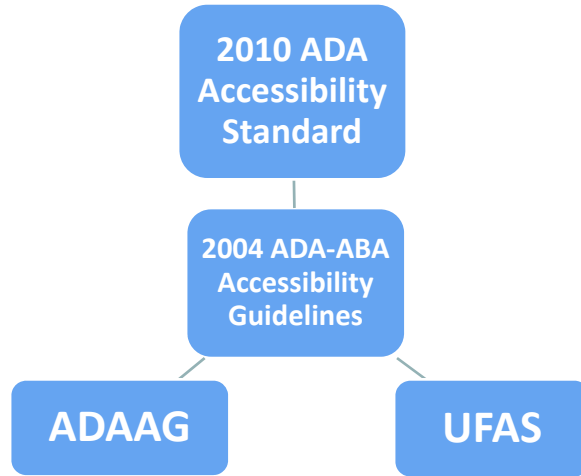


7

**New Standards Under
the ADA & ABA**

8

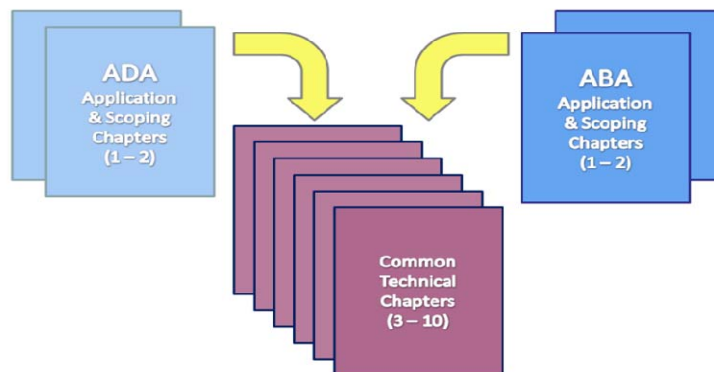
Updated Accessibility Guidelines and Standards



UNITED STATES ACCESS BOARD

9

Updated *ADA and ABA Guidelines (2004)*



10

DOJ's Revised ADA Rule (Regulations)

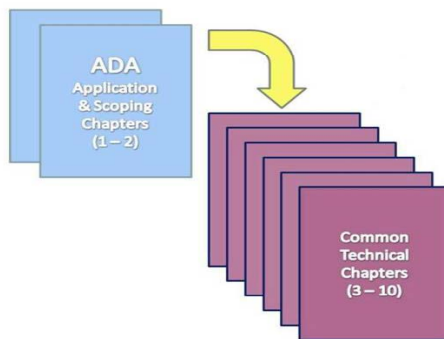
- Nondiscrimination policies
- 2010 Standards
 - New construction and Alterations
 - Additional design requirements
- Application of 2010 Standards to Existing facilities



11



DOJ's ADA Standards (2010)



Excluding ABA
Chapters 1 & 2
(pp. 72 – 140)

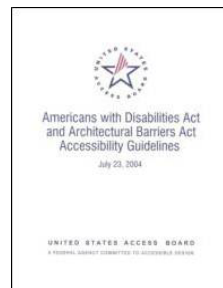
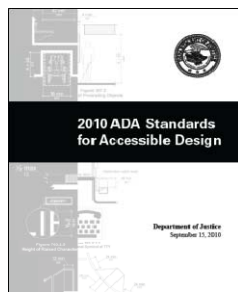
12

New Construction

13

New ADA Standards

DOJ's 2010 standards
(mandatory March 15, 2012)



Based on the Board's ADA-ABA Guidelines
(2004)

UNITED STATES ACCESS BOARD

14

Architectural Barriers Act Accessibility Standards (Federal facilities)

- Similar standards in effect for all federally funded facilities (except housing)
- Effective May 8, 2006 (February 6, 2007 for leased facilities) for new construction alteration



15

Locating Provisions

- Table of Contents
- ADA Application and Scoping
 - ADA Chapter 1: Application and Administration
 - ADA Chapter 2: Scoping Requirements
- ABA Application and Scoping
 - ABA Chapter 1: Application and Administration
 - ABA Chapter 2: Scoping Requirements
- Technical Chapters
 - Chapter 3: Building Blocks
 - Chapter 4: Accessible Routes
 - Chapter 5: General Site and Building Elements
 - Chapter 6: Plumbing Elements and Facilities
 - Chapter 7: Communication Elements and Features
 - Chapter 8: Special Rooms, Spaces and Elements
 - Chapter 9: Built-In Elements
 - Chapter 10: Recreation Facilities

16

Existing Facilities

17

What Standards Apply to Existing ADA Facilities?

- **Title II — Program accessibility**
- **Title III — Readily achievable barrier removal**

*For more information, contact DOJ @ 800
514-0301*

18

Safe Harbor – Existing Facilities

- Elements that comply with 1991 Standards do not need to be modified to meet the 2010 Standards unless those elements are altered on or after March 15, 2012.

Safe Harbor does not apply to elements in existing facilities that were not subject to specific requirements in the 1991 Standards

For more information, contact DOJ @ 800 514-0301

19

Elements in 2010 Standards Not Subject to Safe Harbor

- | | |
|---|---|
| (A) Residential facilities and dwelling units | (I) Saunas and steam rooms |
| (B) Amusement rides | (J) Swimming pools, wading pools, and spas |
| (C) Recreational boating facilities | (K) Shooting facilities with firing positions, |
| (D) Exercise machines and equipment | (L) Miscellaneous. |
| (E) Fishing piers and platforms | (1) Team or player seating |
| (F) Golf facilities | (2) Accessible route to bowling lanes |
| (G) Miniature golf facilities | (3) Accessible route in court sports facilities |
| (H) Play areas | |

For more information, contact DOJ @ 800 514-0301

20

Other Facility Provisions

PARKING, TOILET AND BATHING ROOMS, RETAIL SPACES, LOCKER ROOMS, MARINA OFFICE, RESTURANTS, BARS, AND OTHER SPACES AND ELEMENTS

21



22

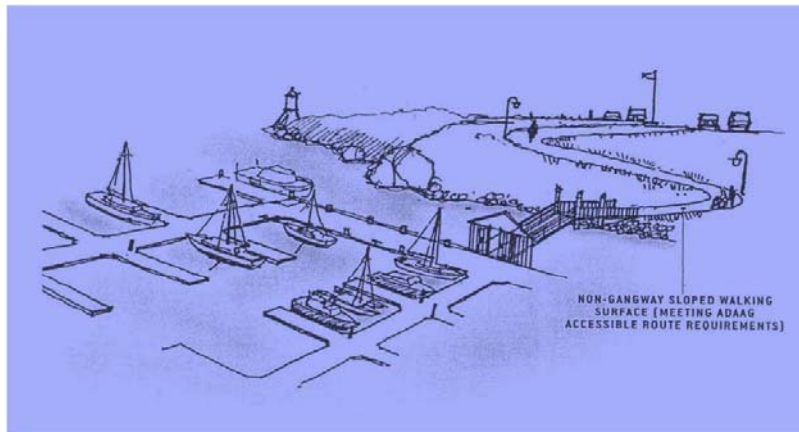
Exterior Accessible Routes



UNITED STATES ACCESS BOARD

23

Exterior Accessible Routes



UNITED STATES ACCESS BOARD

24

Accessible Vehicle Parking



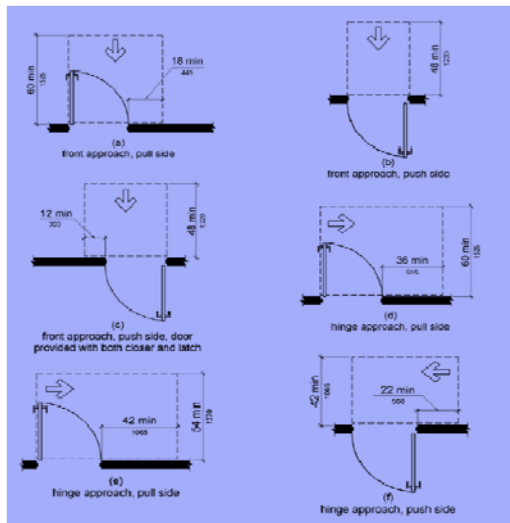
Total Parking in Lot	Required Minimum Number of Accessible Spaces
1 to 25	1
26 to 50	2
51 to 75	3
76 to 100	4
101 to 150	5
151 to 200	6
201 to 300	7
301 to 400	8
401 to 500	9
501 to 1000	2 percent of total
1001 and over	20 plus 1 for each 100 over 1000

1 OF EVERY 6 = VAN SPACE

UNITED STATES ACCESS BOARD

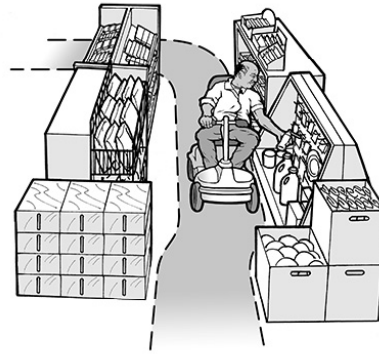
25

Accessible Door Clearances



26

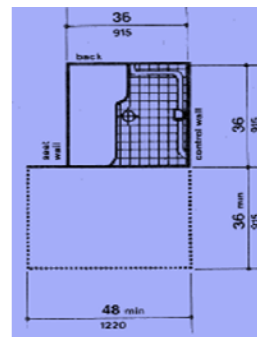
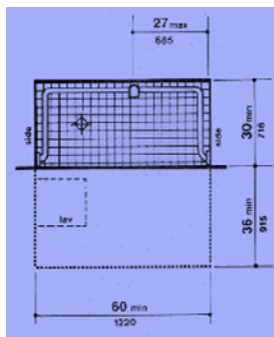
Interior Accessible Routes



UNITED STATES ACCESS BOARD

27

Toilet and Bathing Facilities



UNITED STATES ACCESS BOARD

28

Water Closet Clearance

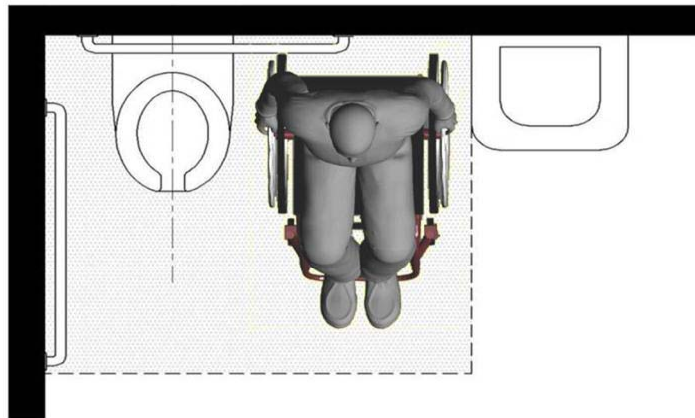
No longer permitted under new standards



29

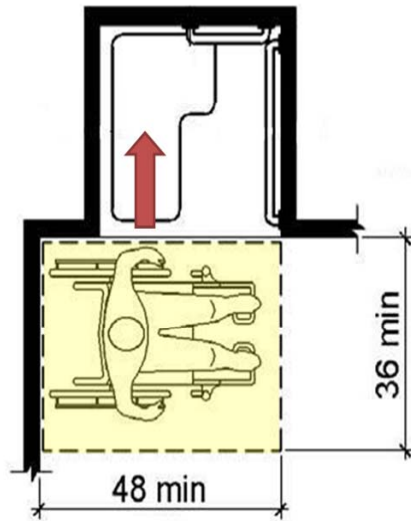
Water Closet Clearance

Allows space for side transfers



30

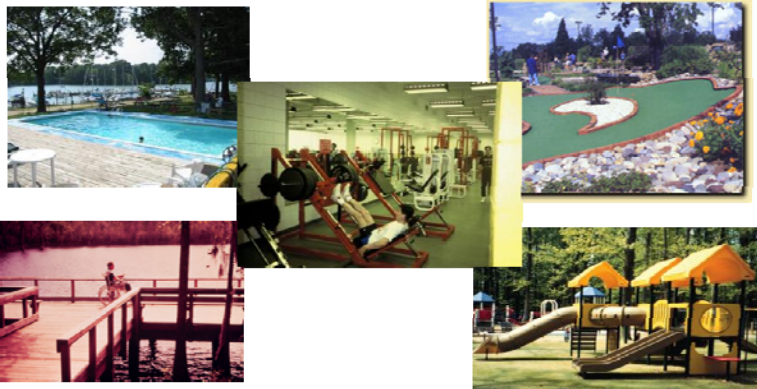
Transfer Stall



Clear floor space positioned for alignment with seat

31

Recreation Facilities



UNITED STATES ACCESS BOARD

32

Boating Facility Provisions

Accessible routes, boat slips, boarding piers at boat launch ramps

33

Recreational Boating Facilities *Section 235*

- Number of boat slips required to be accessible (based on the number of slips provided)
- Dispersion of accessible boat slips throughout the various types provided
- Number of boarding piers at boat launch ramps required to be accessible.

34

Technical Provisions *Section 1003*

- Fixed and floating facilities
- Accessible routes
- Gangways
- Accessible boat slips
- Boarding piers at boat launch ramps



UNITED STATES ACCESS BOARD

35

How Guidelines Apply



UNITED STATES ACCESS BOARD

36

Fixed Boating Facilities



UNITED STATES ACCESS BOARD

37

Floating Boating Facilities



UNITED STATES ACCESS BOARD

38

Gangways



UNITED STATES ACCESS BOARD

39

Gangway Slope

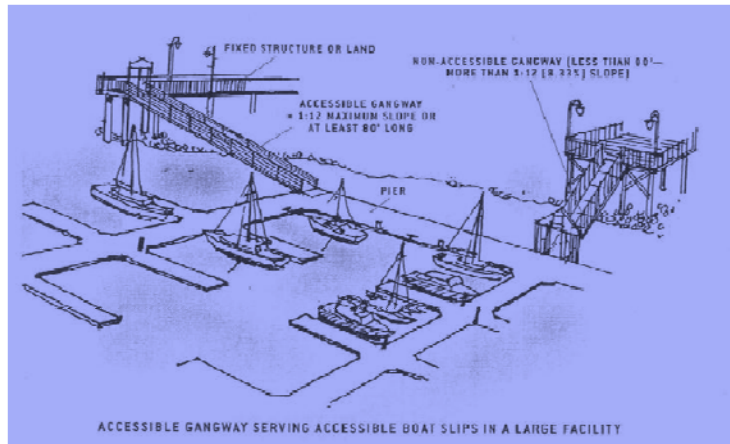
- Gangway slope – connecting floating facilities
 - Design for 1:12 maximum slope OR provide at least an 80 foot gangway



UNITED STATES ACCESS BOARD

40

Gangways Connecting Accessible Boat Slips



UNITED STATES ACCESS BOARD

41

Gangway – Small Facilities

Less than 25 boat slips, the slope of the gangway may exceed 1:12 (8:33%), if the gangway is at least 30 feet long



UNITED STATES ACCESS BOARD

42

Gangway - Rise



UNITED STATES ACCESS BOARD

43

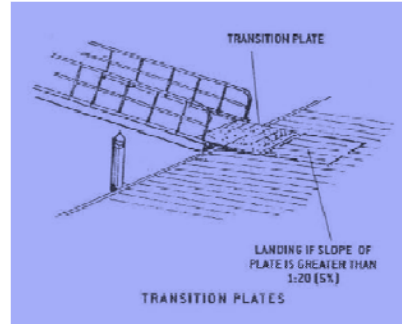
Gangways – Gates and Doors



UNITED STATES ACCESS BOARD

44

Gangway – Transition Plates



UNITED STATES ACCESS BOARD

45

Gangway – Handrail Extensions



UNITED STATES ACCESS BOARD

46

Gangway – Width



UNITED STATES ACCESS BOARD

47

Cross Slope – Gangways, Transition Plates, and Floating Piers



1:50 maximum measured in the static position

UNITED STATES ACCESS BOARD

48

Fixed Ramps on Floating Facilities

Follow accessible route requirements - maximum 1:12 slope, landings every 30 feet, edge protection, handrails, etc.



UNITED STATES ACCESS BOARD

49

Route Leading to Accessible Boat Slips



UNITED STATES ACCESS BOARD

50

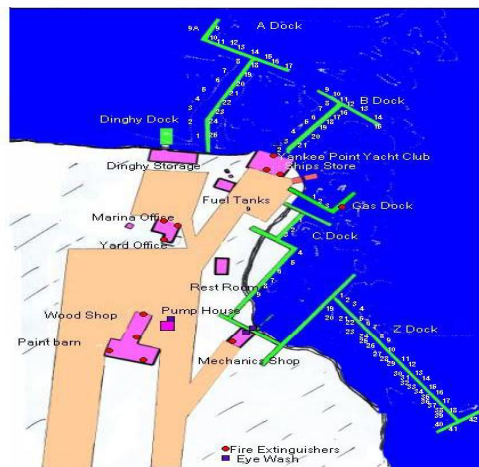
Use of Elevators and Platform Lifts



UNITED STATES ACCESS BOARD

51

Boat Slips



UNITED STATES ACCESS BOARD

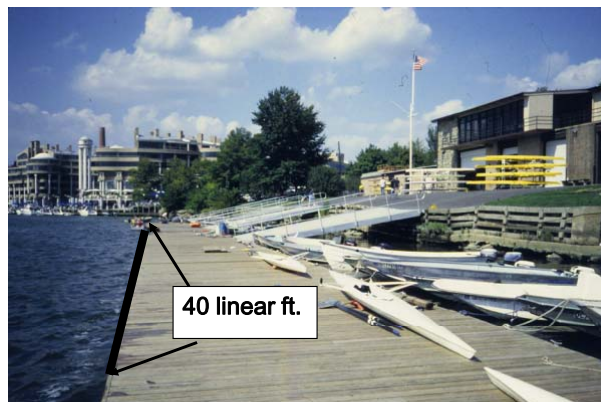
52

Boat Slips

- Number of accessible boat slips
- Uses modified vehicle parking table

Boat Slips Provided	Minimum Accessible
1-25	1
26-50	2
51-100	3
101-150	4
151-300	5
301-400	6
401-500	7
501-600	8
601-700	9
701-800	10
801-900	11
901-1000	12
1001 and over	*
*12 + 1 for each 100 or fraction thereof	

Boat Slips



Accessible Boat Slips

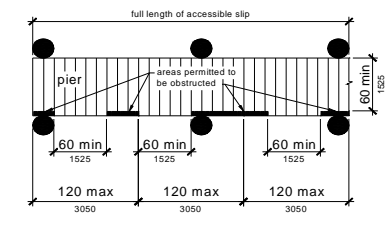


Fig. 59
Pier Clearances

- Accessible boat slip – 60 inches width of clear pier space
- Where obstructed, at least one opening of 60 inches in width every 10 feet
- Edge protection permitted

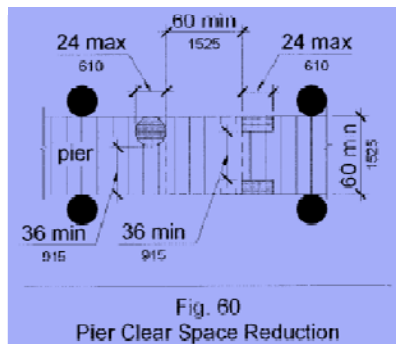
Transfer Methods



Not required by the standards



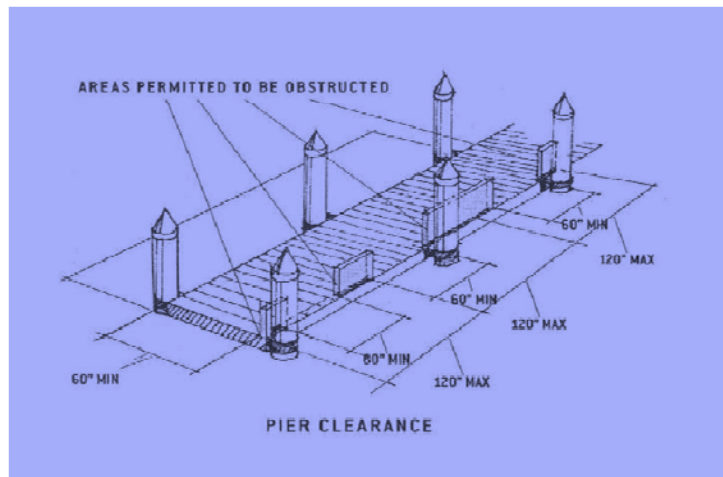
Accessible Boat Slips – Clear Space Reduction



UNITED STATES ACCESS BOARD

57

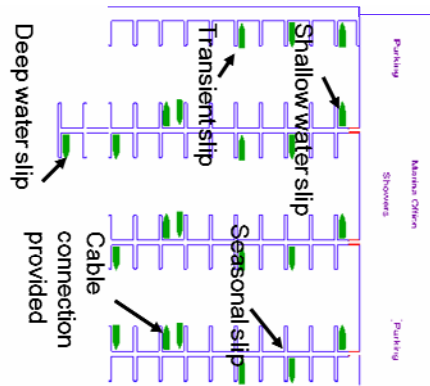
Accessible Boat Slips



UNITED STATES ACCESS BOARD

58

Accessible Boat Slips - Dispersion

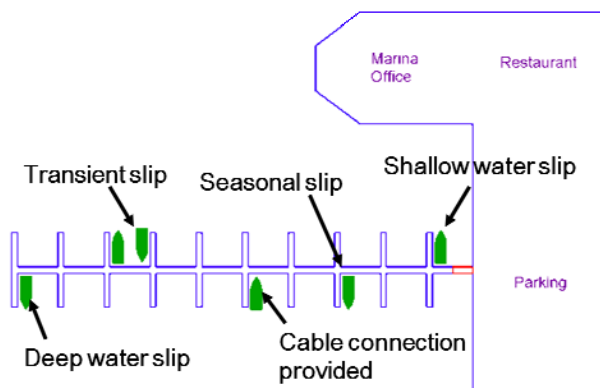


- Dispersed throughout the various types of slips provided
- Does not require an increase in the number of slips required to be accessible

UNITED STATES ACCESS BOARD

59

Accessible Boat Slips - Dispersion



Clustering of accessible slips is permitted

UNITED STATES ACCESS BOARD

60

Accessible Boat Slips – Identification

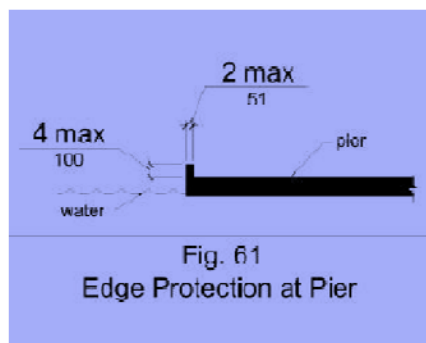
No requirement for identification

- Not reserved in the same way as accessible vehicle parking spaces
- Make information regarding accessible boat slips available in promotional material or a facility guide
- Contact DOJ on operational issues

UNITED STATES ACCESS BOARD

61

Accessible Boat Slips – Edge Protection

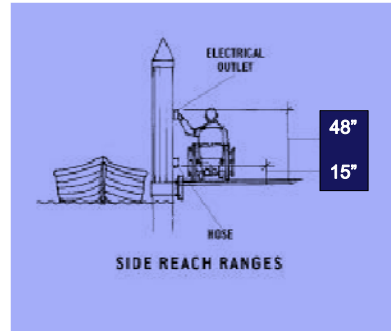


- Edge protection is not required
- If provided at opening...
- 4 inches high maximum and 2 inches deep maximum at the continuous clear openings

UNITED STATES ACCESS BOARD

62

Accessible Boat Slips – Hose Bibbs, Water Supply Hoses, Outlets for Electric, Cable, etc.



UNITED STATES ACCESS BOARD

63

Accessible Boat Slips – Cleats and Other Securement Devices



Not required to be located within reach ranges

UNITED STATES ACCESS BOARD

64

Boarding Piers at Launch Ramps

- Where gangways connect
 - Design for 1:12 OR provide at least a 30 foot gangway
- Accessible route within boat launch ramp – maximum slope does not apply



UNITED STATES ACCESS BOARD

65

Boarding Piers at Boat Launch Ramps - Clearances



- Entire length of the boarding pier must be 60 inches wide minimum
- Every 10 feet maximum of pier edge must have at least one clear opening 60 inches in length

UNITED STATES ACCESS BOARD

66

Launch Ramps without Boarding Piers



UNITED STATES ACCESS BOARD

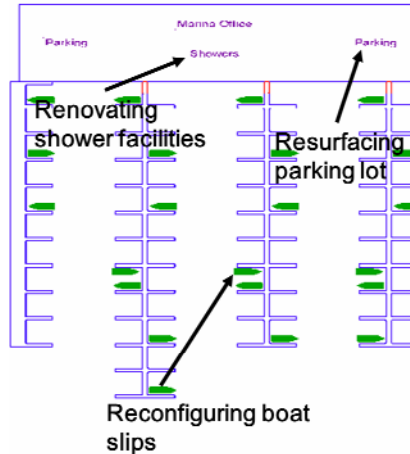
67

Alterations to Existing Facilities

68

What's Considered an Alteration?

- **Examples of alterations**
 - Redesigning boat slips
 - Replacement of floating docks
 - Re-surfacing parking lot
- **Painting, re-roofing, and general maintenance activities are not considered an alteration**



UNITED STATES ACCESS BOARD

69

Requirements for Alterations

- **Follow accessibility standards new construction**
- **“Technically infeasible”**
- **“What you touch - you fix”**
- **Alterations to “primary function areas” carry additional obligation**

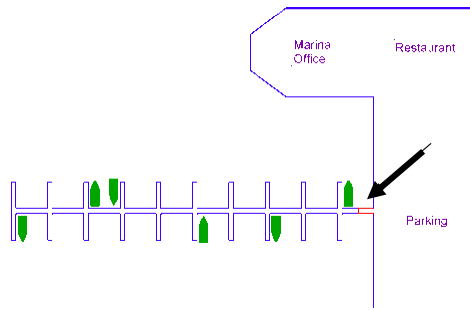


UNITED STATES ACCESS BOARD

70

Requirements for Alterations – Path of Travel Obligations

- Where alteration is made to “primary function area”
- Area altered must be done in compliance with standards along with an accessible “path of travel” to the altered area
- 20% disproportionate rule



UNITED STATES ACCESS BOARD

71

Gangway – Alteration

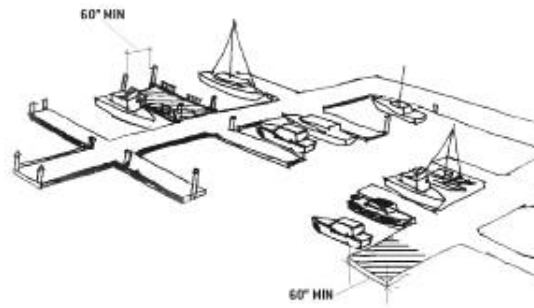


- Where an existing gangway is replaced or altered, an increase in the length is not required (unless required by path of travel obligations)

UNITED STATES ACCESS BOARD

72

Accessible Boat Slips – Alterations



ACCESSIBLE FINGER PIERS

UNITED STATES ACCESS BOARD

73

Technical Assistance Material



<http://www.access-board.gov/indexes/pubsindex.htm>

74

Questions?

You May Type and Submit questions in the Chat Area Text Box or press Control-M and enter text in the Chat Area

75



U.S. Access Board

(800) 872-2253 (voice)

(800) 993-2822 (TTY)

E-mail: ta@access-board.gov

www.access-board.gov

76

**Thank you for participating
in today's webinar**



Next scheduled session:

“ACCESSIBLE SCHOOLS”

December 1, 2011

www.AccessibilityOnline.org

877-232-1990 (V/TTY)

77